



Leiden University
Medical Center

Magnetic Resonance Direct Thrombus Imaging (MRDTI) studies



Cindy de Jong, arts-onderzoeker
Afdeling Trombose en Hemostase
Leids Universitair Medisch Centrum
✉ C.M.M.de_Jong@lumc.nl

Disclosure belangen spreker: Cindy de Jong

Dutch Thrombosis Academy – 30 juni 2022

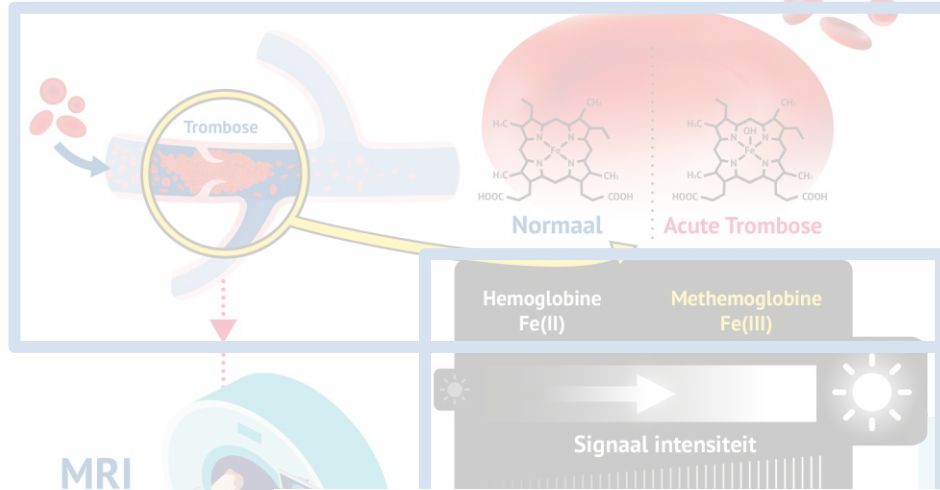
(potentiële) Belangenverstrengeling Geen

Voor bijeenkomst mogelijk
relevante relaties met bedrijven Geen

- Sponsoring of onderzoeksgeld Geen
- Honorarium of andere
(financiële) vergoeding
- Aandeelhouder
- Andere relatie, namelijk:

Magnetic Resonance Direct Thrombus Imaging (MRDTI)

MR Direct Thrombus Imaging



MRI

KRACHT VAN DE TECHNIEK

- Onderscheid tussen **acute** en **chronische** trombose
- Nauwkeurig in beeld brengen van notoir moeilijk te diagnosticeren veneuze trombo-embolie

MR Direct thrombus imaging

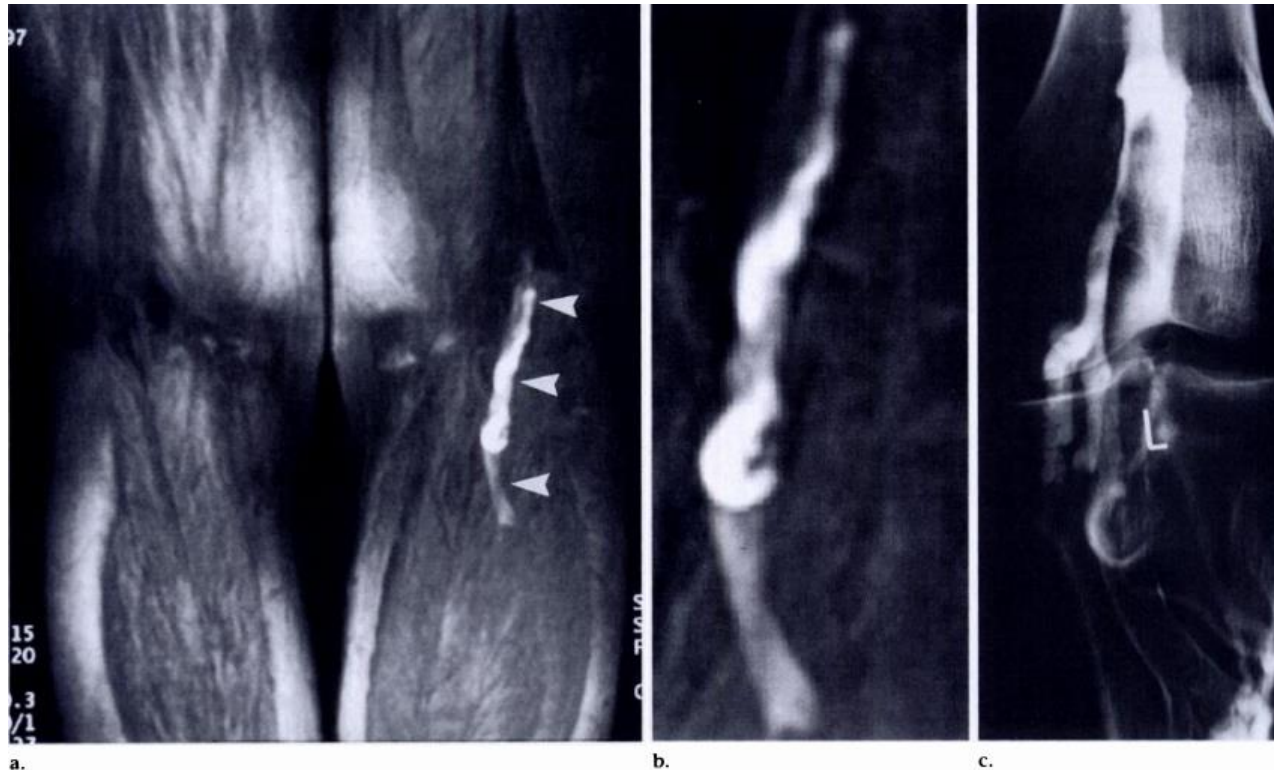
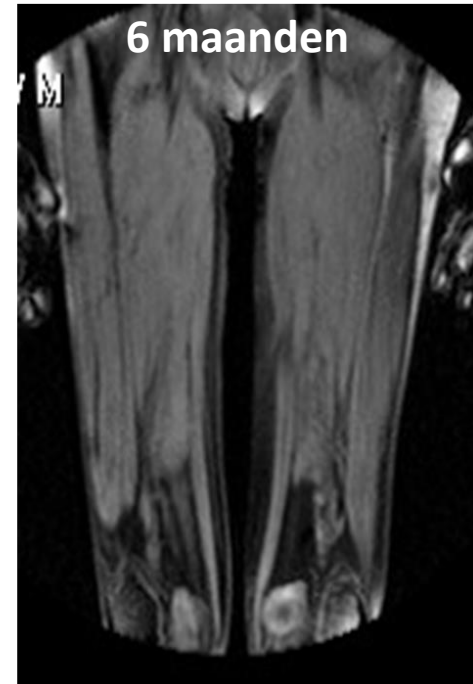
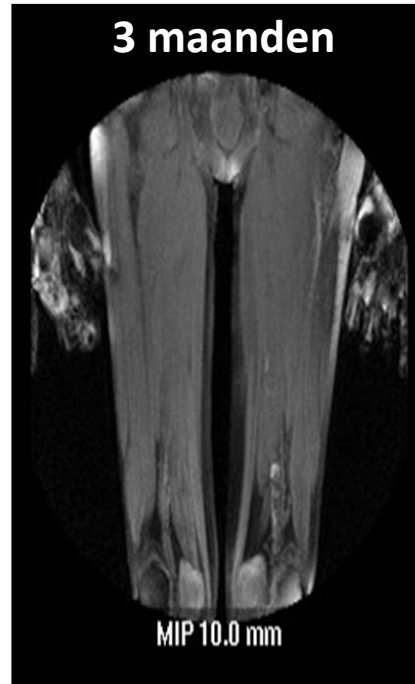
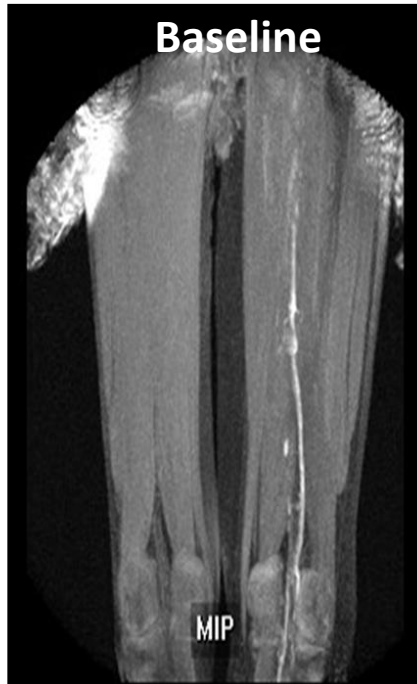


Figure 1. (a) MR image (MIP view) (10.3/4.0) shows a moderately large popliteal vein thrombus (arrowheads). (b) MR image (magnified view) (10.3/4.0) allows appreciation of the morphology of the clot. (c) Venogram shows a filling defect, the shape of which closely matches that of the clot on the MR image (a, b).

Verdwijnen van het DTI signaal



Na 6 maanden: 0% afwijkende MRDTI, 31% afwijkende CUS

MRDTI studies: Titanen programma



Theia



Selene



Gaia



Rhea



Tethys

MRDTI studies



Theia

Ipsilateraal
recidief DVT



Selene

Armvene trombose



Gaia

Sinustrombose



Rhea

Splanchnische
veneuze trombose

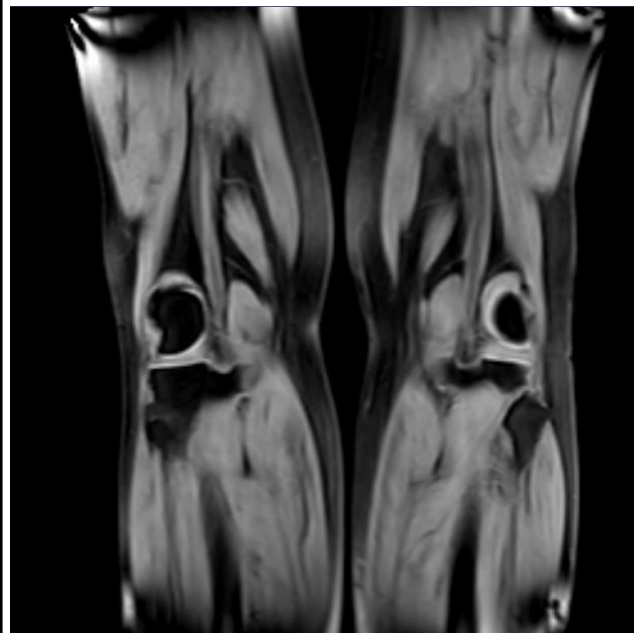


Tethys

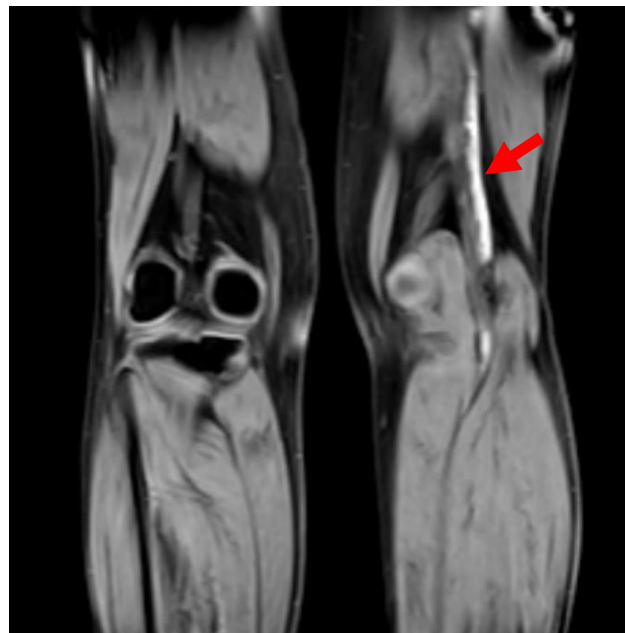
Geïsoleerde
bekkenvene
trombose

- Ipsilateraal recidief DVT kon veilig worden uitgesloten met MRDTI
- MRDTI bleek reproduceerbaar en 'haalbaar'

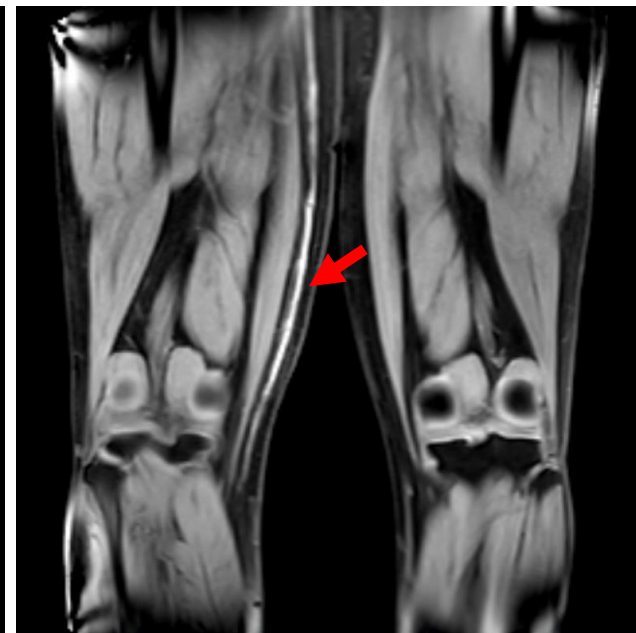
Theia studie: MRDTI plaatjes



Negatieve MRDTI



Acuut recidief DVT linker been



Acute thromboflebitis rechter been

MRDTI studies



Theia

Ipsilateraal
recidief DVT



Selene

Armvene trombose



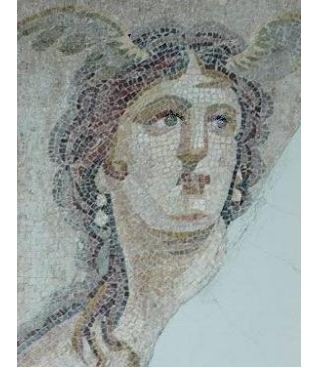
Gaia

Sinustrombose



Rhea

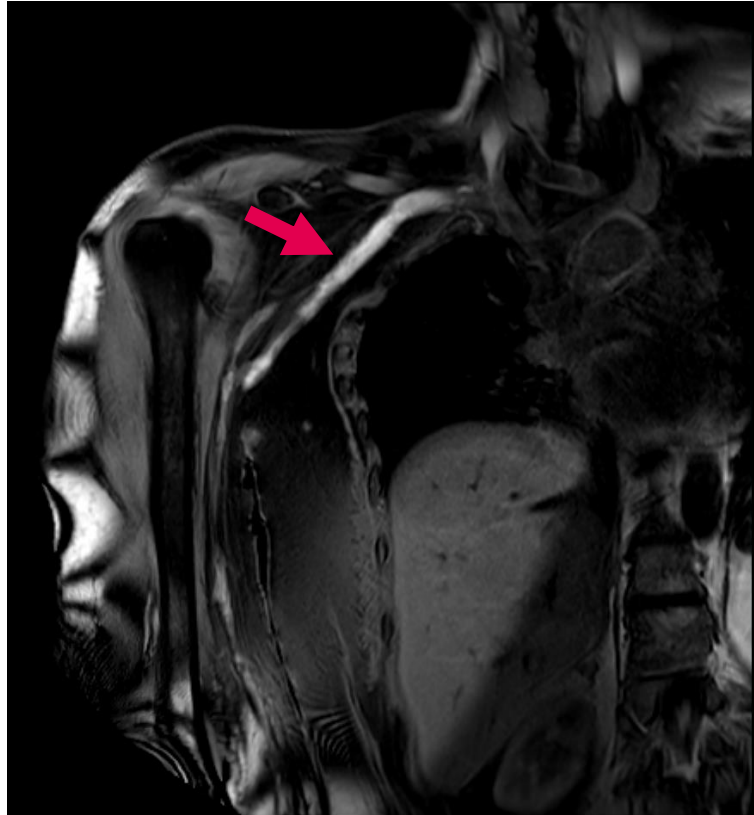
Splanchnische
veneuze trombose



Tethys

Geïsoleerde
bekkenvene
trombose

MRDTI bij armvene trombose



MRDTI studies



Theia

Ipsilateraal
recidief DVT



Selene

Armvene trombose



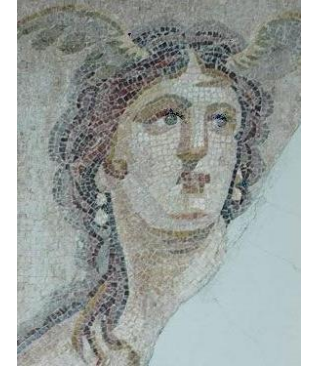
Gaia

Sinustrombose



Rhea

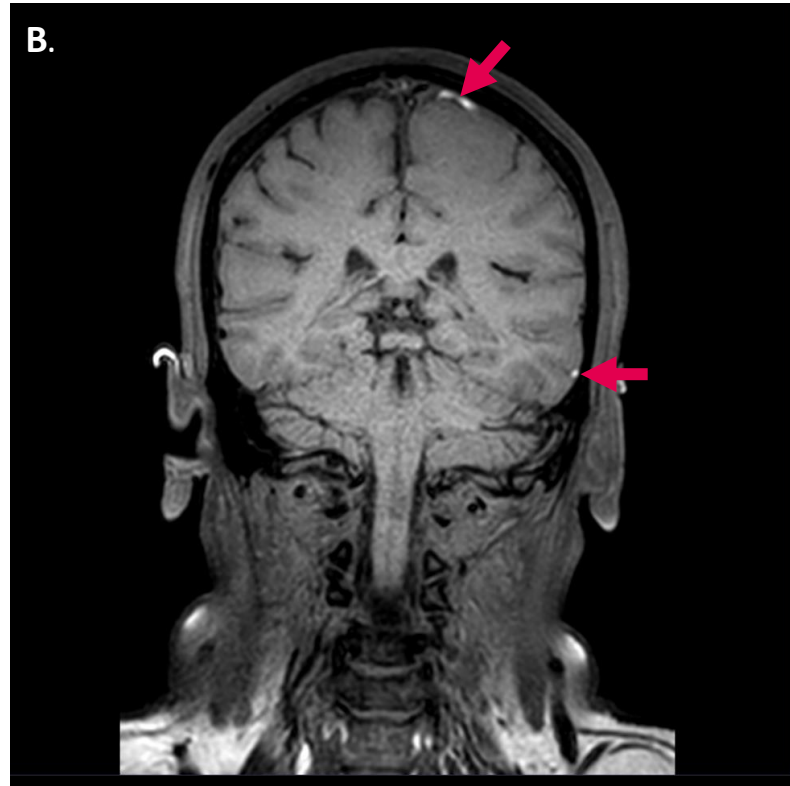
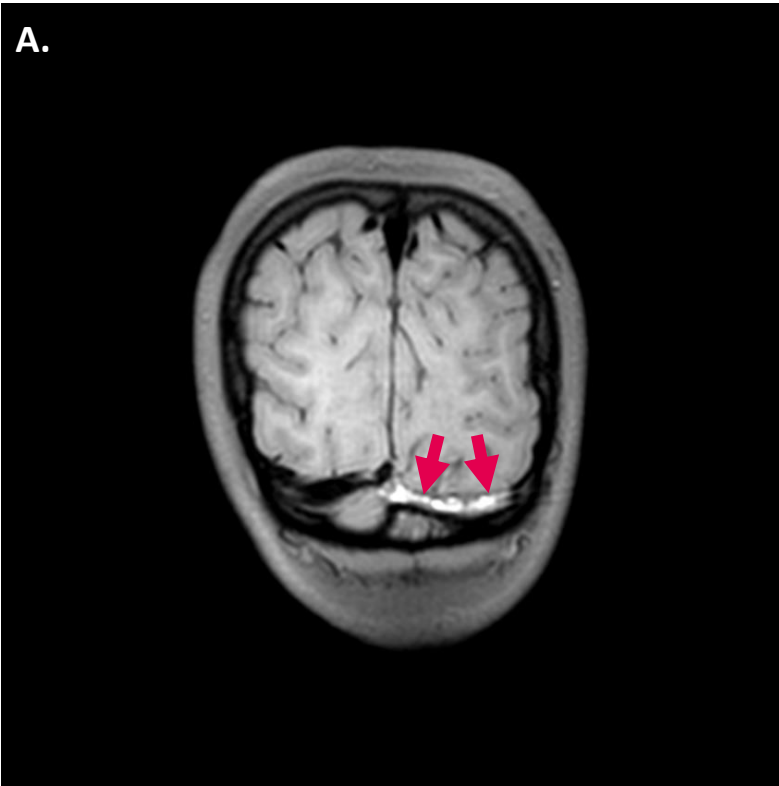
Splanchnische
veneuze trombose



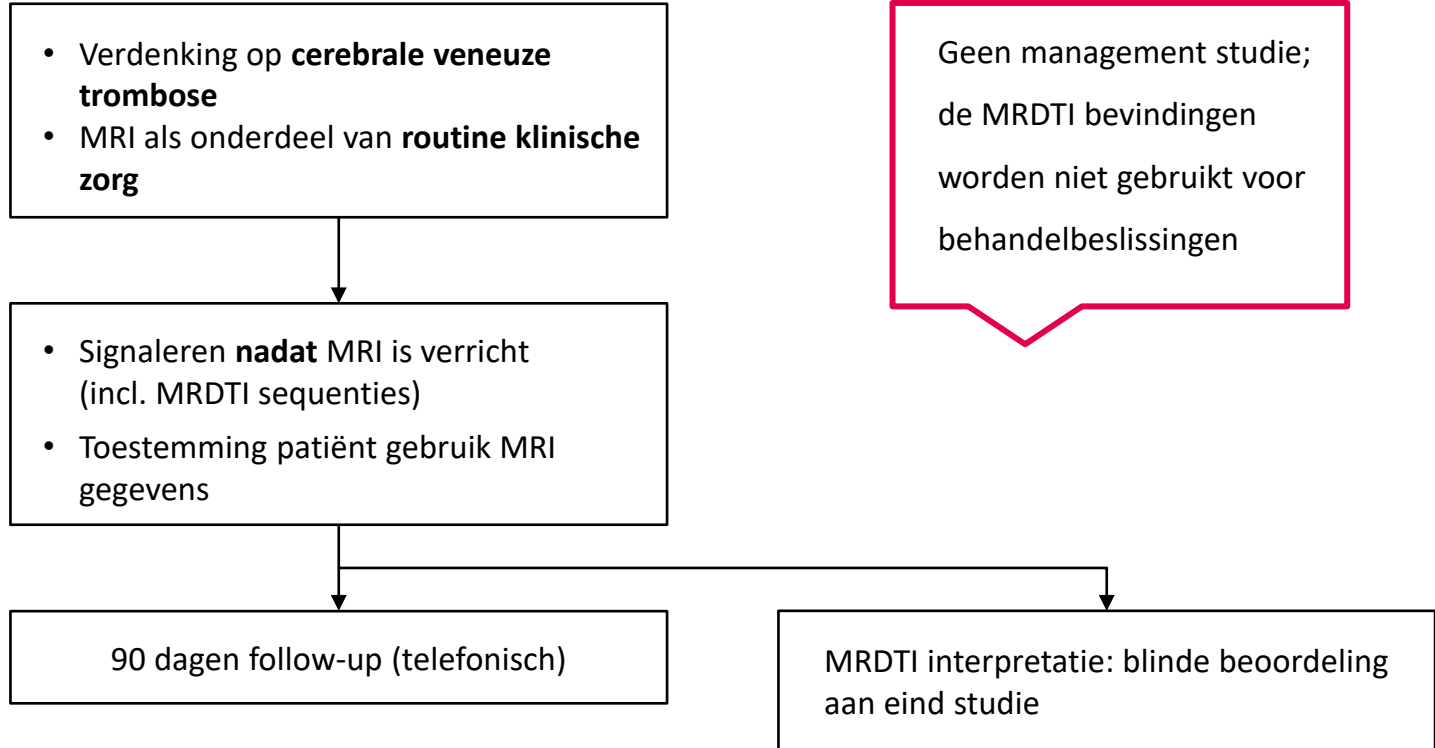
Tethys

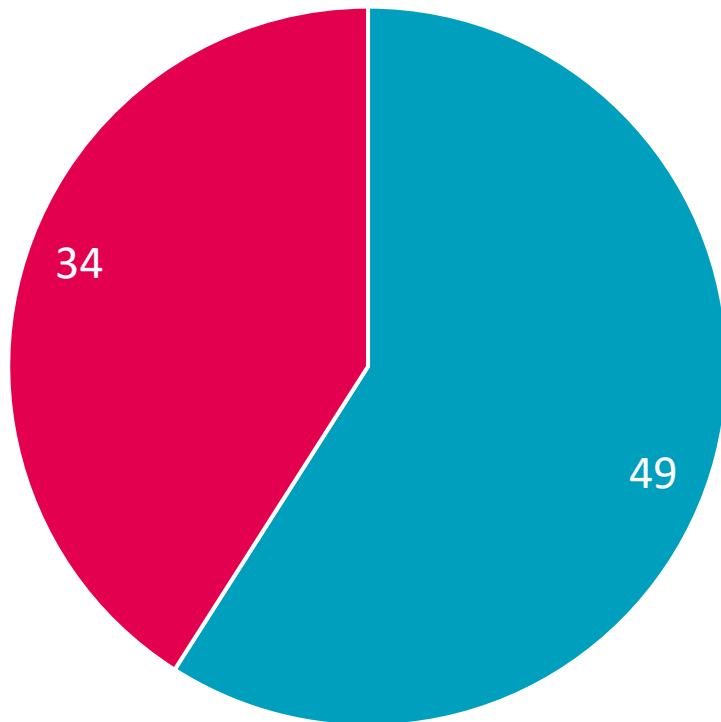
Geïsoleerde
bekkenvene
trombose

MRDTI bij sinustrombose



Gaia studie





■ Inklusies ■ Te includeren



MRDTI studies



Theia

Ipsilateraal
recidief DVT



Selene

Armvene trombose



Gaia

Sinustrombose



Rhea

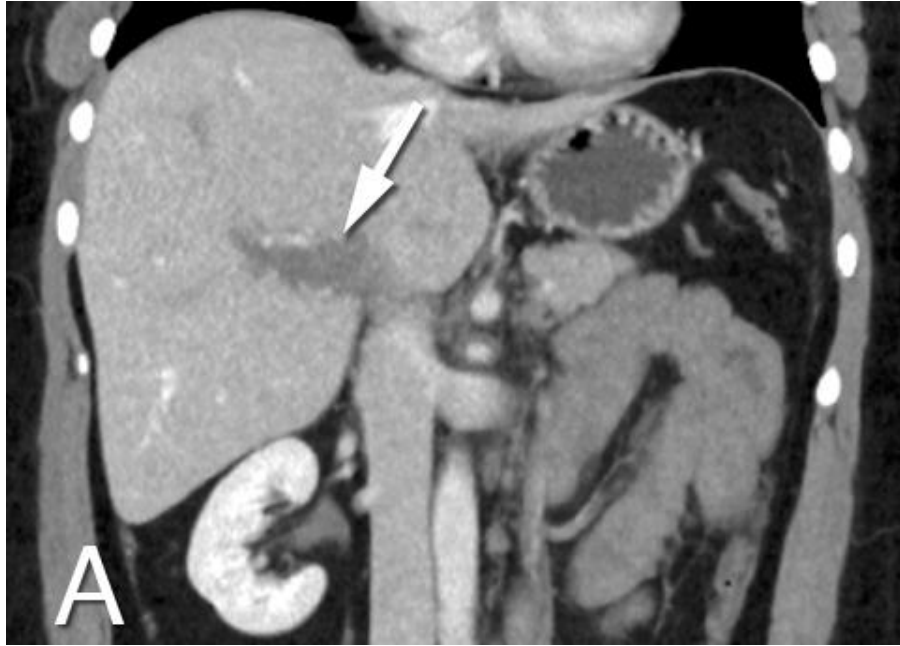
Splanchnische
veneuze trombose



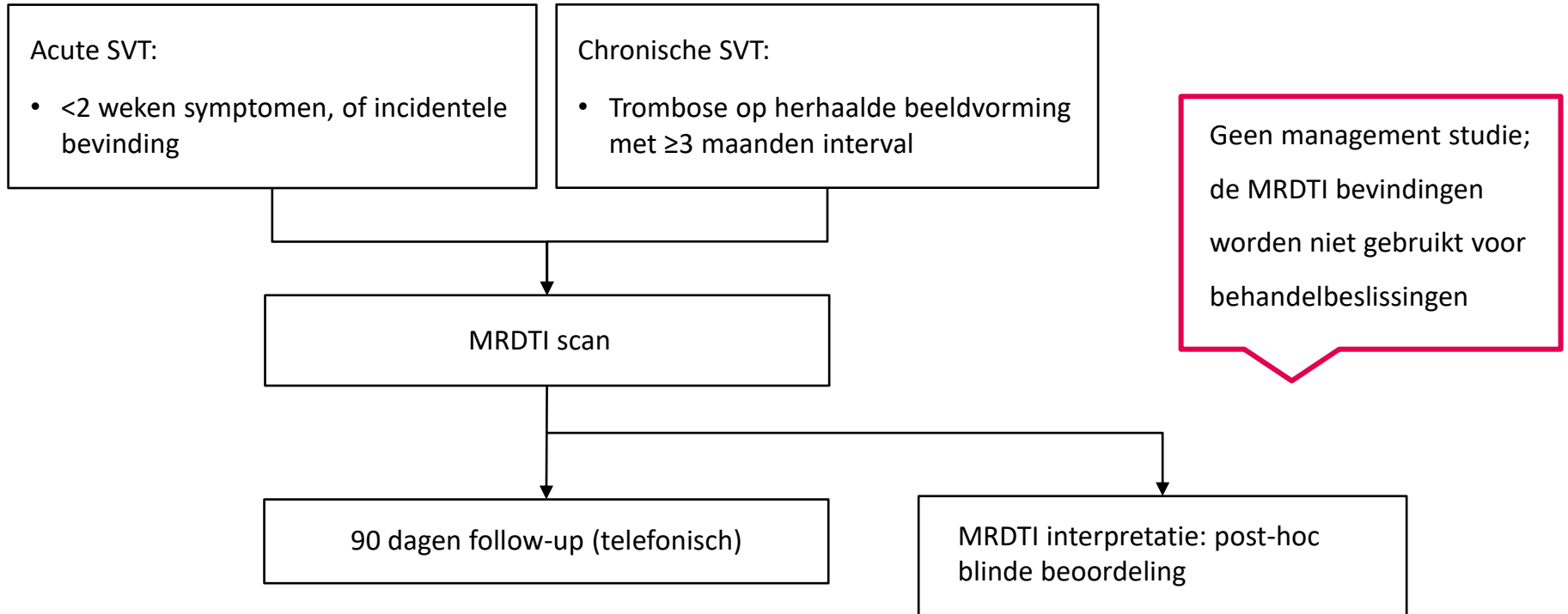
Tethys

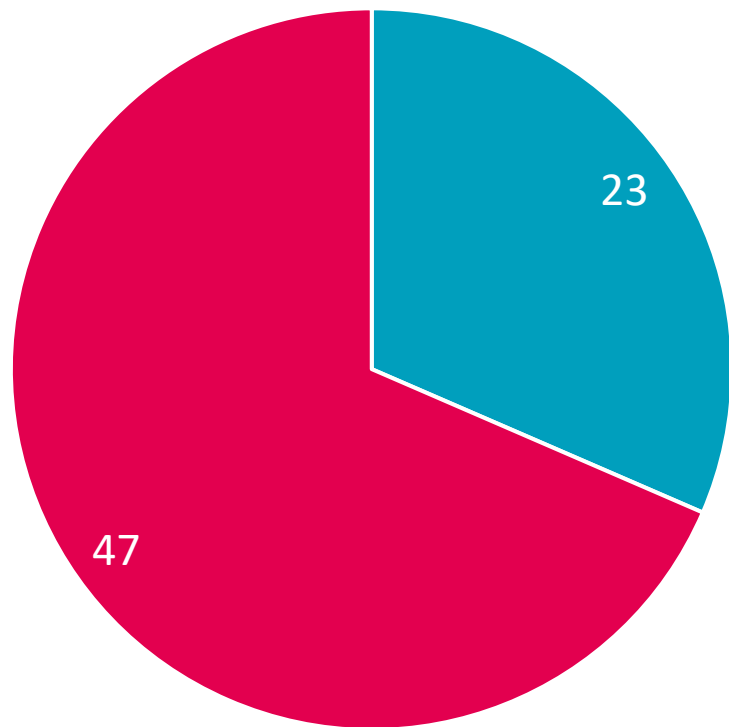
Geïsoleerde
bekkenvene
trombose

MRDTI bij vena porta trombose



Rhea studie





■ Inklusies

■ Te includeren

Varese hospital

Erasmus MC
Universitair Medisch Centrum Rotterdam



LEIDEN UNIVERSITY MEDICAL CENTER

MRDTI studies



Theia

Ipsilateraal
recidief DVT



Selene

Armvene trombose



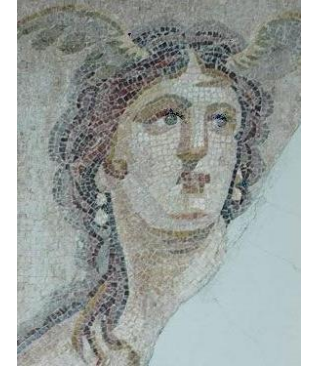
Gaia

Sinustrombose



Rhea

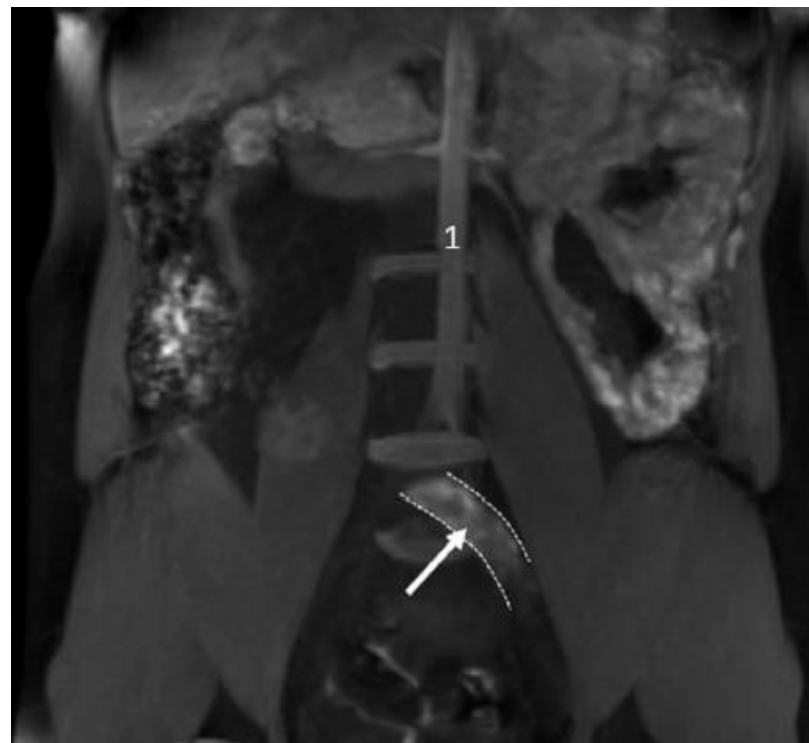
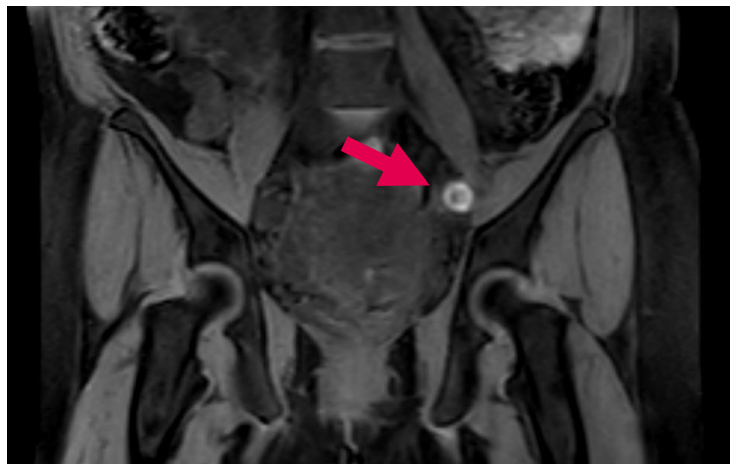
Splanchnische
veneuze trombose



Tethys

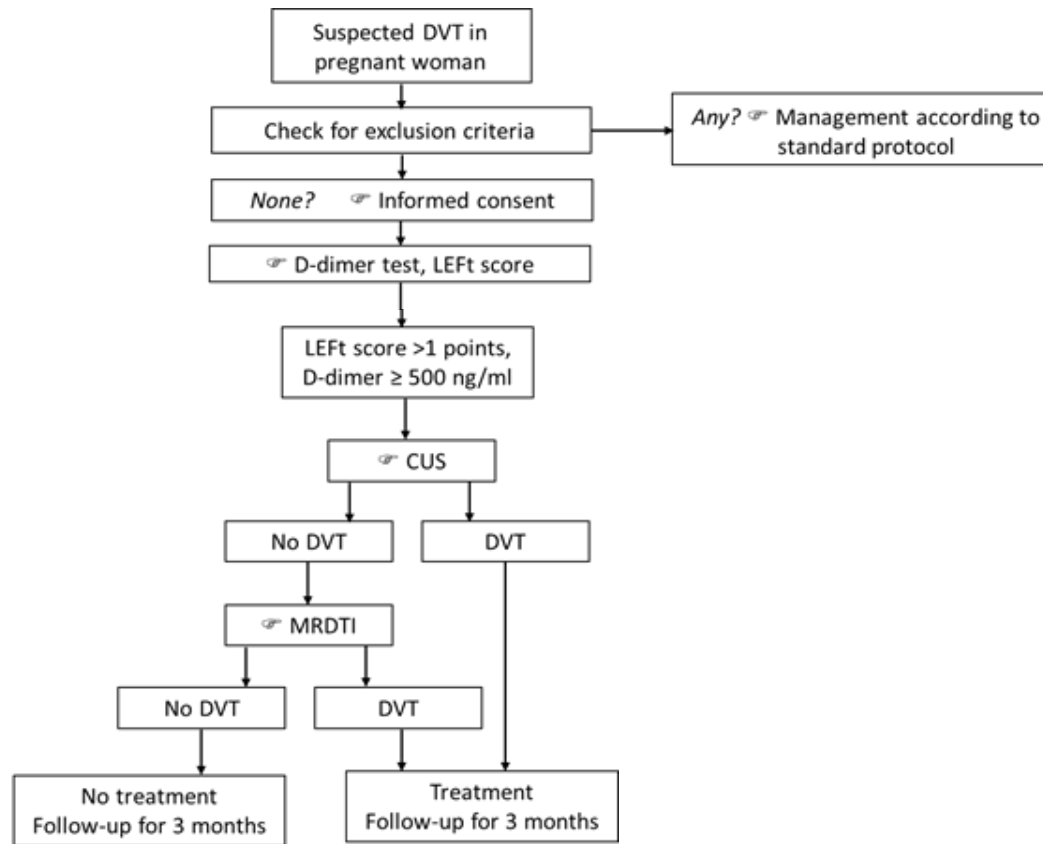
Geïsoleerde
bekkenvene
trombose

MRDTI bij verdenking DVT bij zwangere

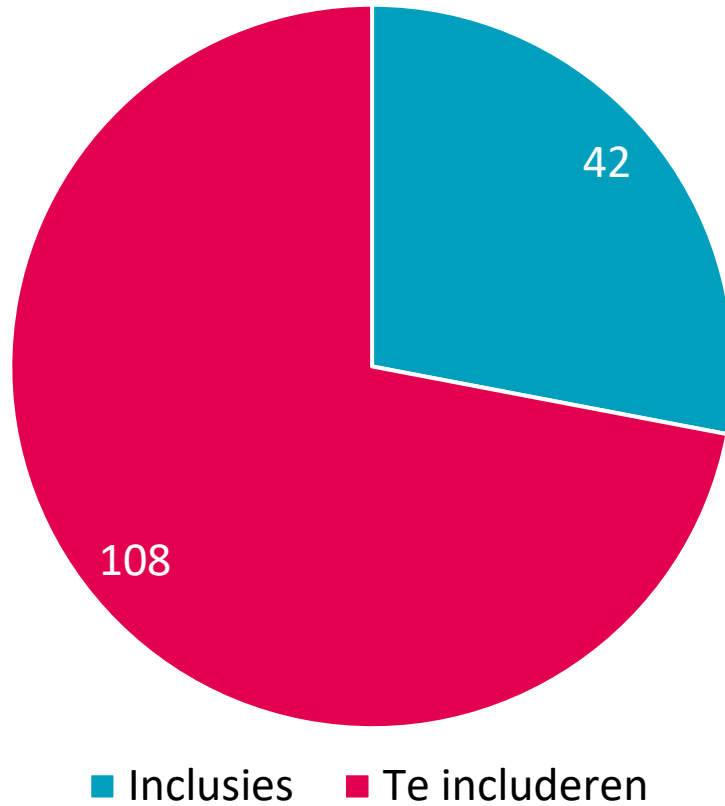


Dronkers *et al*, BMJ Case Rep 2016

Tethys studie



Tethys studie



Diakonessenhuis



LEIDEN UNIVERSITY MEDICAL CENTER

Vena porta trombose bij hepatocellulair carcinoom

- Macrovasculaire invasie
- Vaker systemische trombose

Identificeren patienten met verhoogd risico op VTE?

MRDTI

- *Onderscheid tumortrombus en veneuze porta trombose?*
- *Mate trombusvorming ('verse' trombose) in vena porta?*

MRDTI bij tumortrombi



Themis?



Mnemosyne?



Phoibe?

